



Salem

THE SALEM *SCHROTE*

Become a Patron!





The Salem *Schrote* – Arts & Crafts Center, Classrooms, Events Hall

1. The *Schrote*

1.1 Location

1.2 Future Uses

1.3 Space Planning

2. Demolition and New Construction

2.1 Construction Stages

2.2 Schedule

3. Donations for the *Schrote*

3.1 Financing

3.2 Donor Options

4. Statements from the Project Managers

5. Contact Information



1. The Schrote

1.1 Location



Schrote

- 1 RENTAMT: Jahrgang 5-6, Wohnen und Lernen
- 2 RENTAMT-GARTEN: Spiel- und Freizeitbereich
- 3 FREIZEITANLAGE: Spiel und Sport
- 4 SPORHALLE II: Sportbereich, Fitnessraum, Schülerküche
- 5 PAUSENHOF
- 6 SCHROTE: Werkstätten (Handwerk 5-8), Lernzentrum 7-8, Multifunktionsraum mit Bühne (Versammlung 5-10)
- 7 OBERES TOR: Gesamtleitung, Geschäftsführung, Verwaltung, Aufnahme, Stipendien, International Office, Krankenquartier (KraOu), Kommunikation, Fundraising
- 8 JUNIBAU MIT HALLENBAD: Jahrgang 7-8, Wohnen
- 9 OBERER LANGBAU: Jahrgang 7-8, Wohnen
- 10 ZEHNTSCHEUNE: Schulsport, Veranstaltungen, Freizeit
- 11 UNTERER LANGBAU MIT MINT-ZENTRUM: Lernzentrum 9, Naturwissenschaften, Bibliothek
- 12 STOCKACHER TOR
- 13 SCHULPARKPLATZ
- 14 SPORTANLAGE: Fußball, Hockey, Basketball, Leichtathletik, Beachvolleyball
- 15 CLUBHAUS, SCHREINEREI
- 16 DIENSTEZENTRUM FÜR FEUERWEHR
- 17 HAUPTBAU: Jahrgang 9-10, Wohnen und Lernen, Lernzentrum 10, Kreuzgang, Spelsaal 9-10
- 18 HAUPTBAU: Torkel, Wohnzimmer
- 19 HAUPTBAU: Internats- und Unterrichtsleitung, Spelsaal 5-8, Södeingang
- 20 HAUPTBAU: Kapitelsaal, Novizen I bis III, Dekanat
- 21 SCHLOSS SÜDFLÜGEL: Study Hall, Jahrgang 10, Wohnen und Lernen
- 22 INNENHOF



1. The Schrote

1.1 Location



Bird's eye view of Salem Monastery about 1664

- Built in 1601 as grainary, renovated after fire in 1958 (historical stepped gable and the neighboring monastery wall were preserved)
- Usable floor space: approx. 605 m²
- Previously used as silo and store rooms





1. The *Schrote*

1.2 Future Uses

Activity center and meeting space for all class years of the lower and middle schools:

Basement

Arts & Crafts Center

Ground floor and 2nd floor

Learning Center Years 7 + 8

Top floor

Assembly Hall

Meeting place for Years 5-10 (seating capacity: 350 Persons)

Music and Theater Center – stage performances, musicals, concerts, music competitions, examinations etc.

Modern lighting and sound technology, flexible stage construction

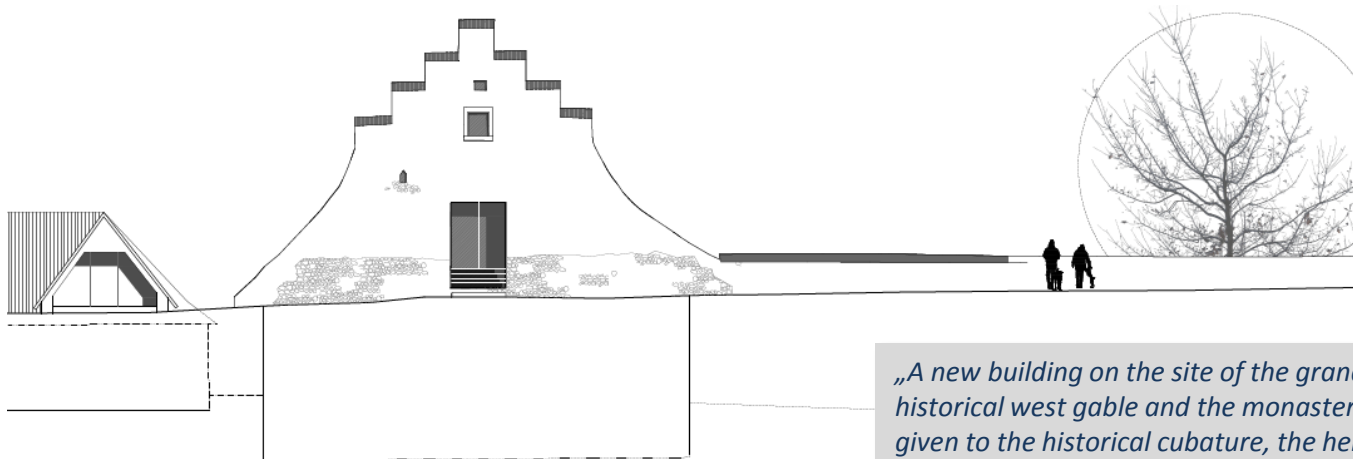




1. The Schrote 1.3 Space Planning



View from the east



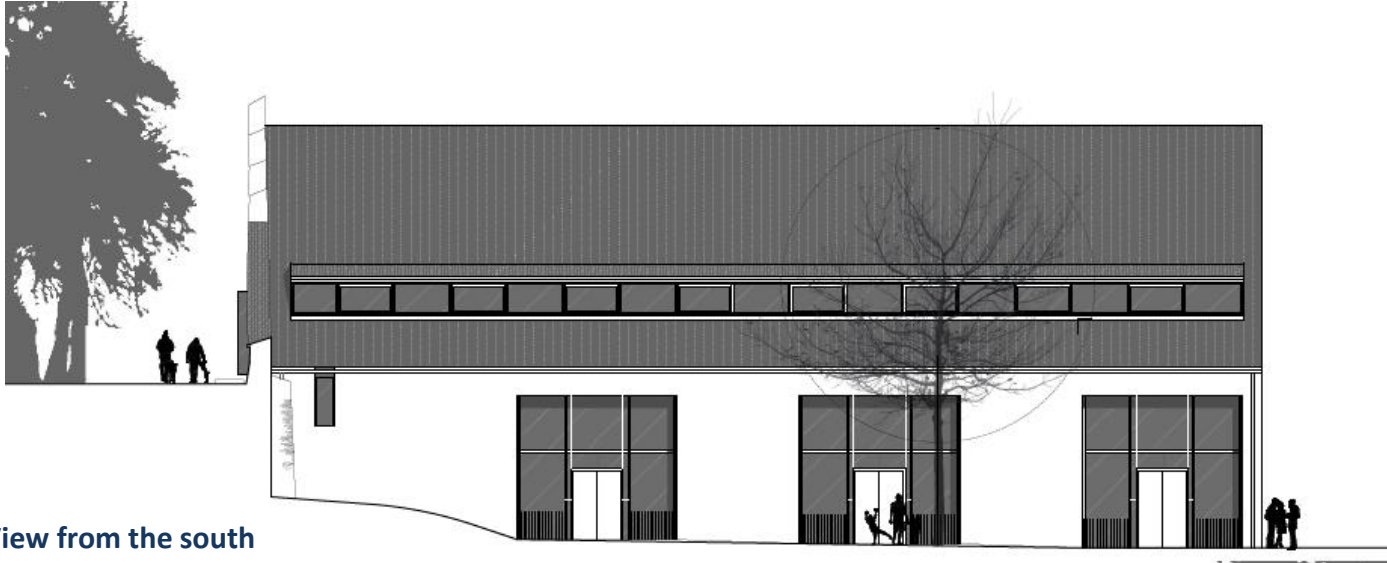
View from the west

„A new building on the site of the granary is conceivable in the event that the historical west gable and the monastery wall are retained and consideration is given to the historical cubature, the height of the ridge and eaves, and the shape and pitch of the roof of the present structure, so as to preserve the historical overall impact of the Sennhof.“

(cf. Statement of Historic Preservation Office, dated 22.07.2014)



1. The Schrote 1.3 Space Planning



View from the south

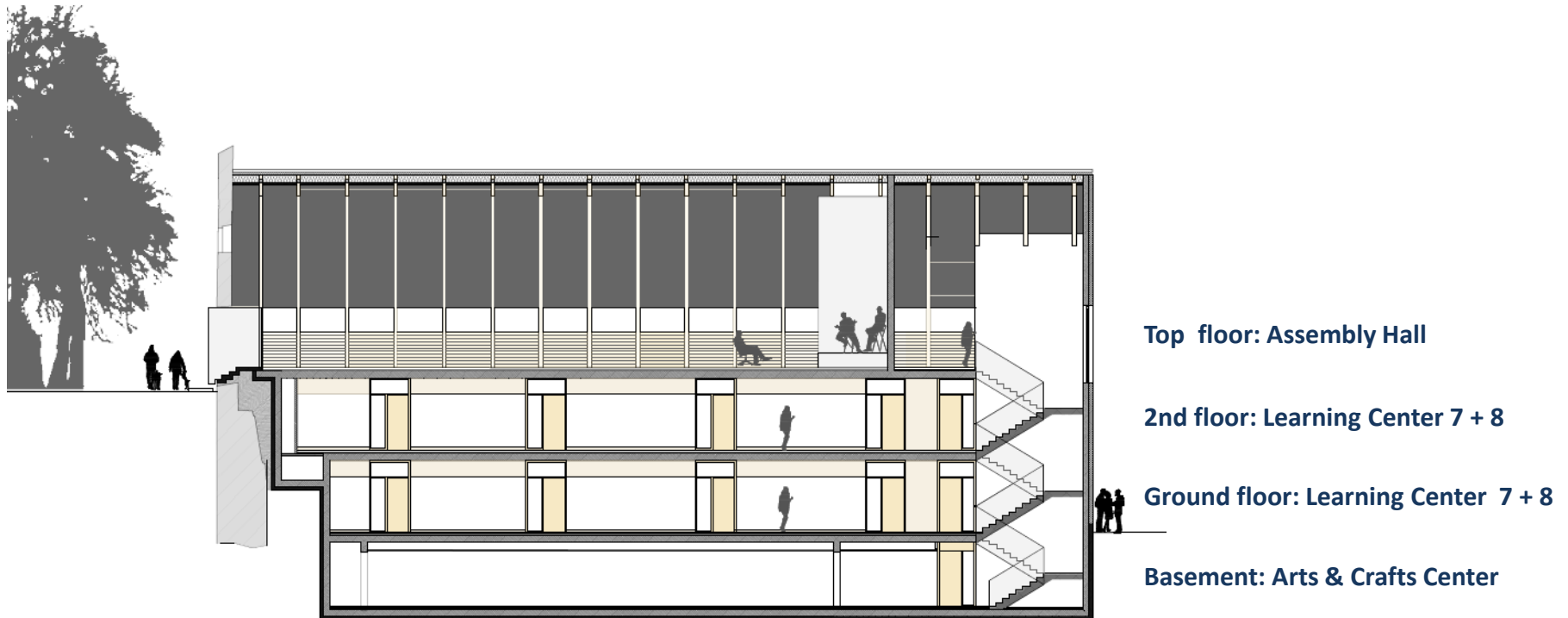


View from the north



1. The Schrote 1.3 Space Planning

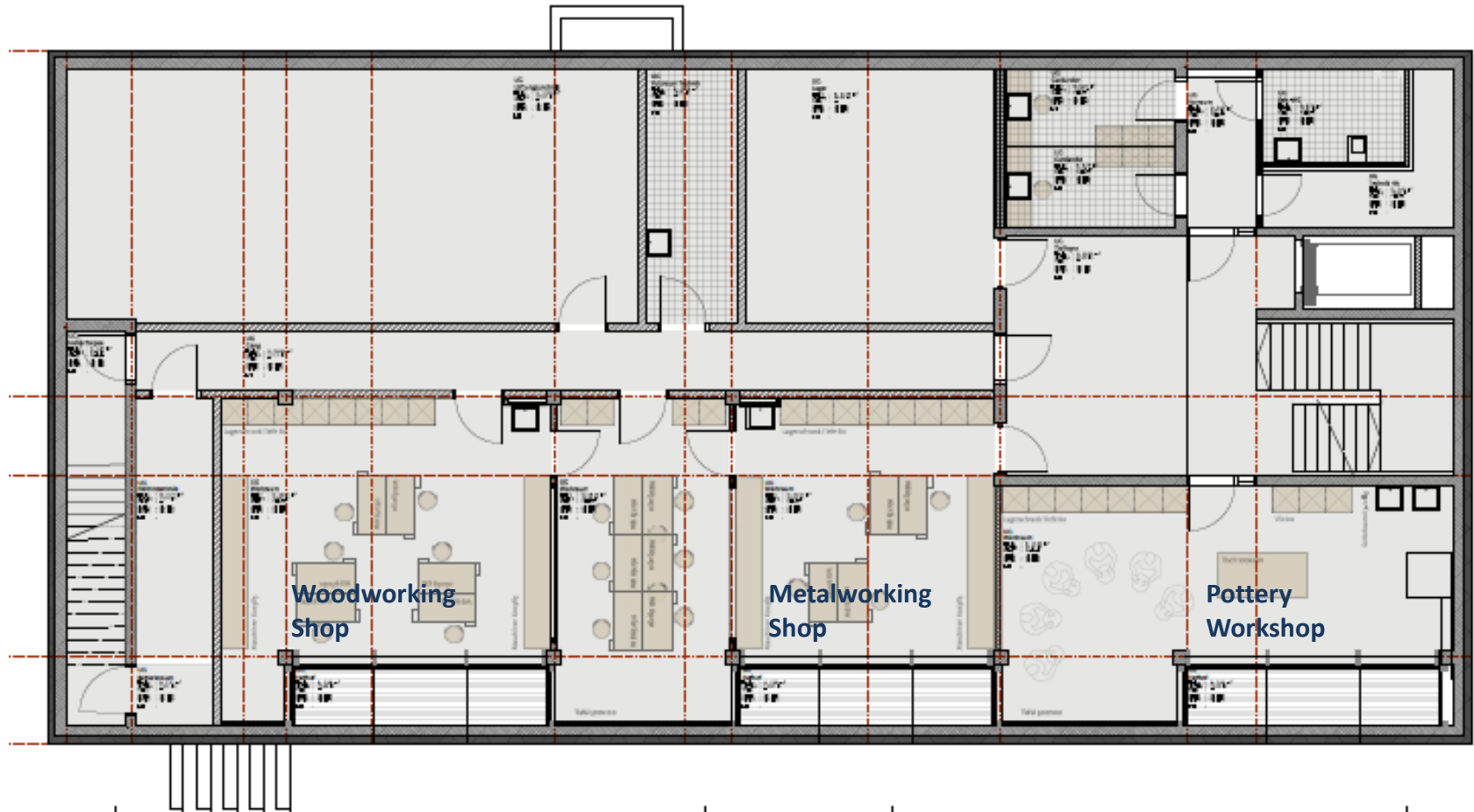
Longitudinal section





1. The Schrote 1.3 Space Planning

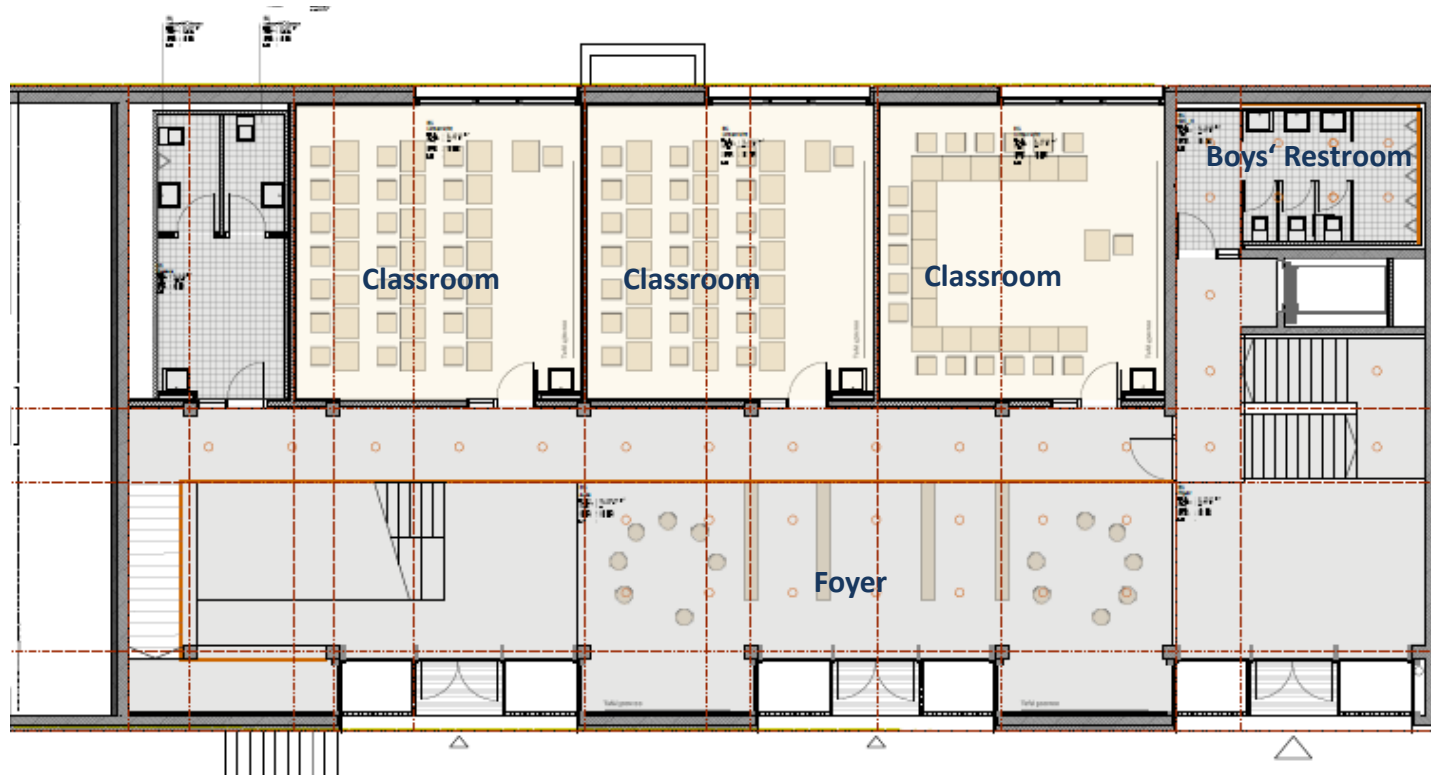
Floor plan: Basement Arts & Crafts Center





1. The Schrote 1.3 Space Planning

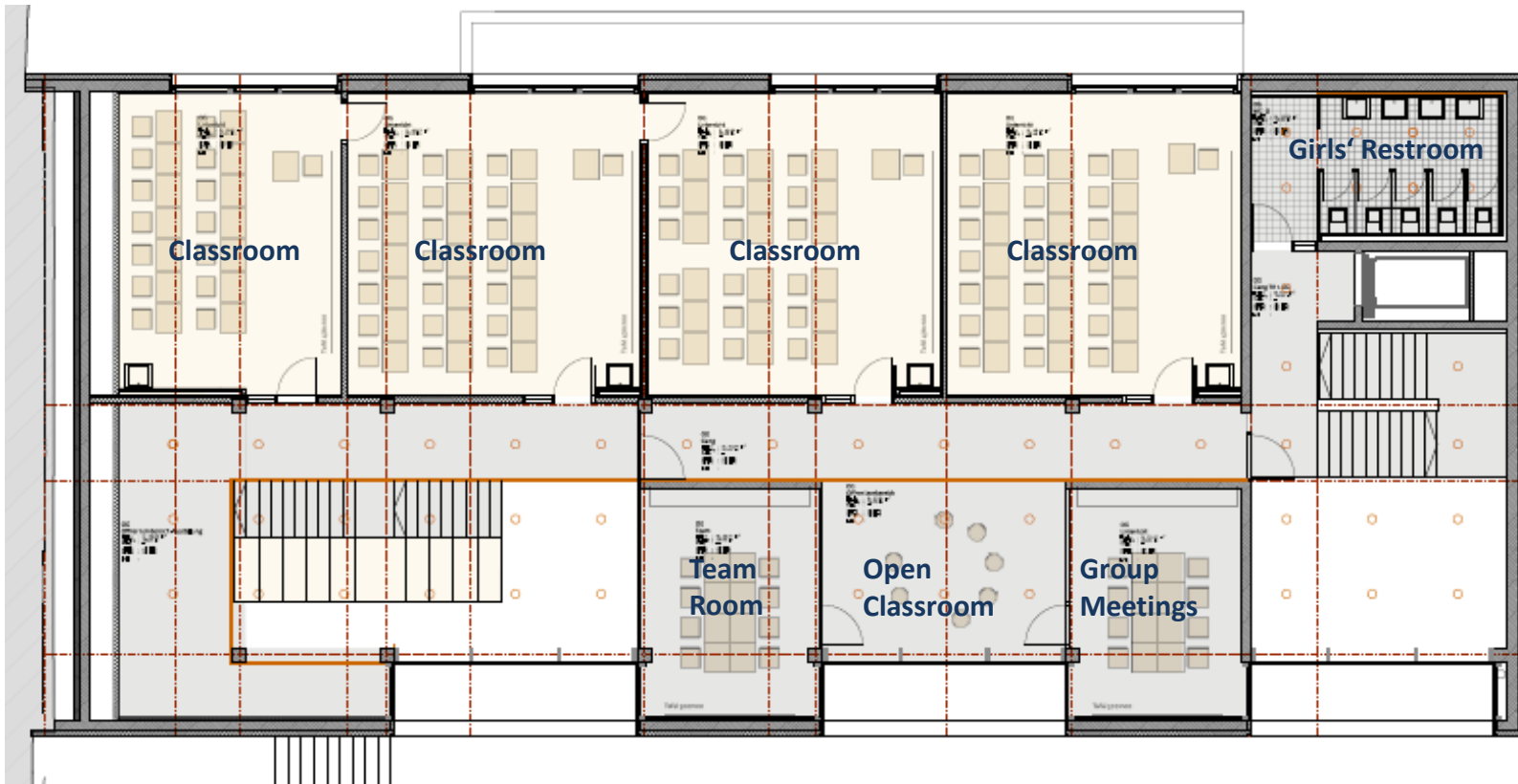
Floor plan: Ground floor
Learning Center 7 + 8





1. The Schrote 1.3 Space Planning

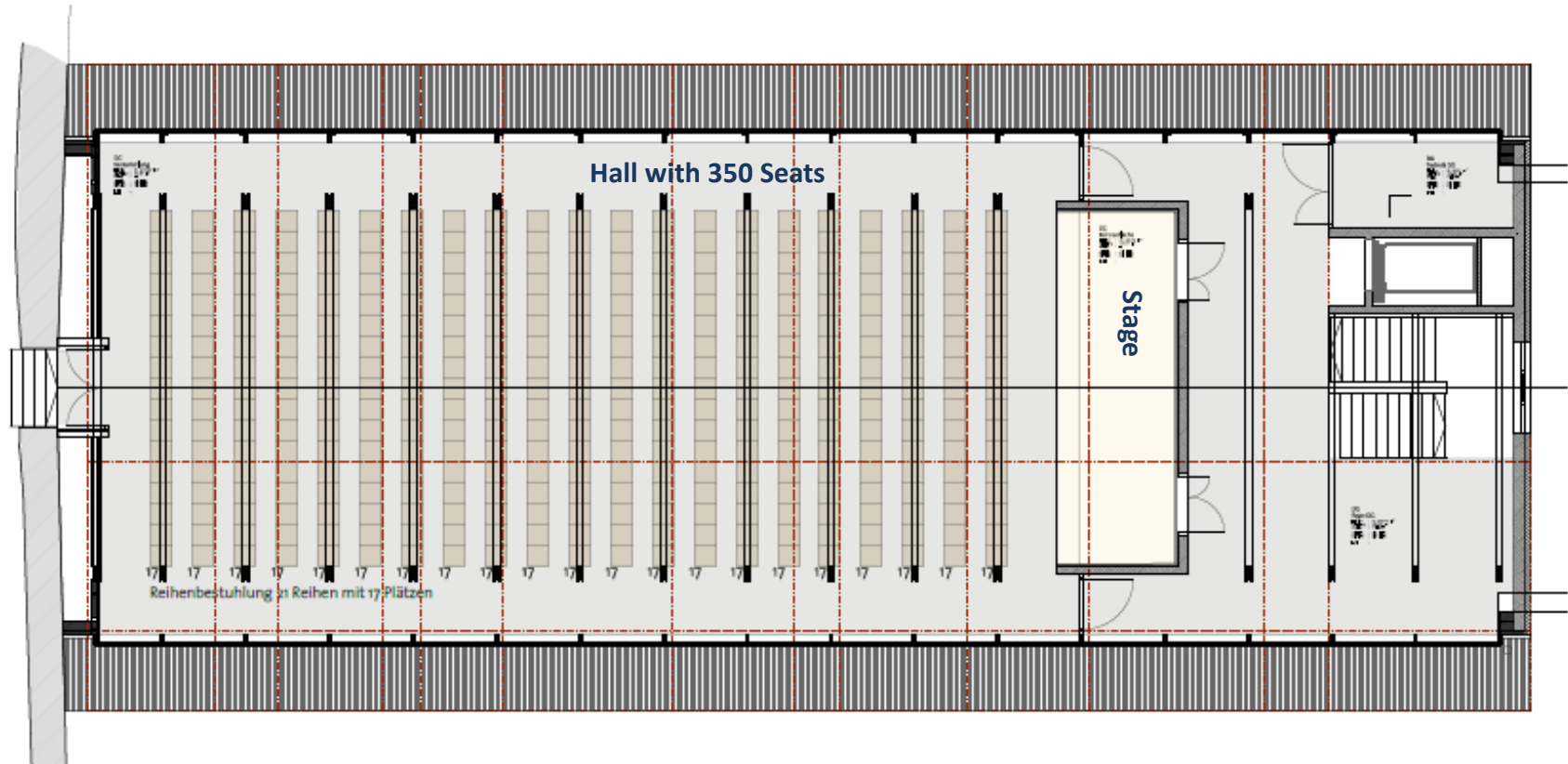
Floor plan: 2nd floor
Learning Center 7 + 8





1. The Schrote 1.3 Space Planning

Floor plan: Top floor
Assembly Hall





Salem

2. Demolition and New Building

2.1 Construction Stages

Careful and vibration-free demolition of the old *Schrote*

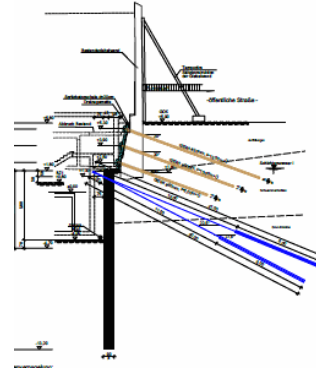




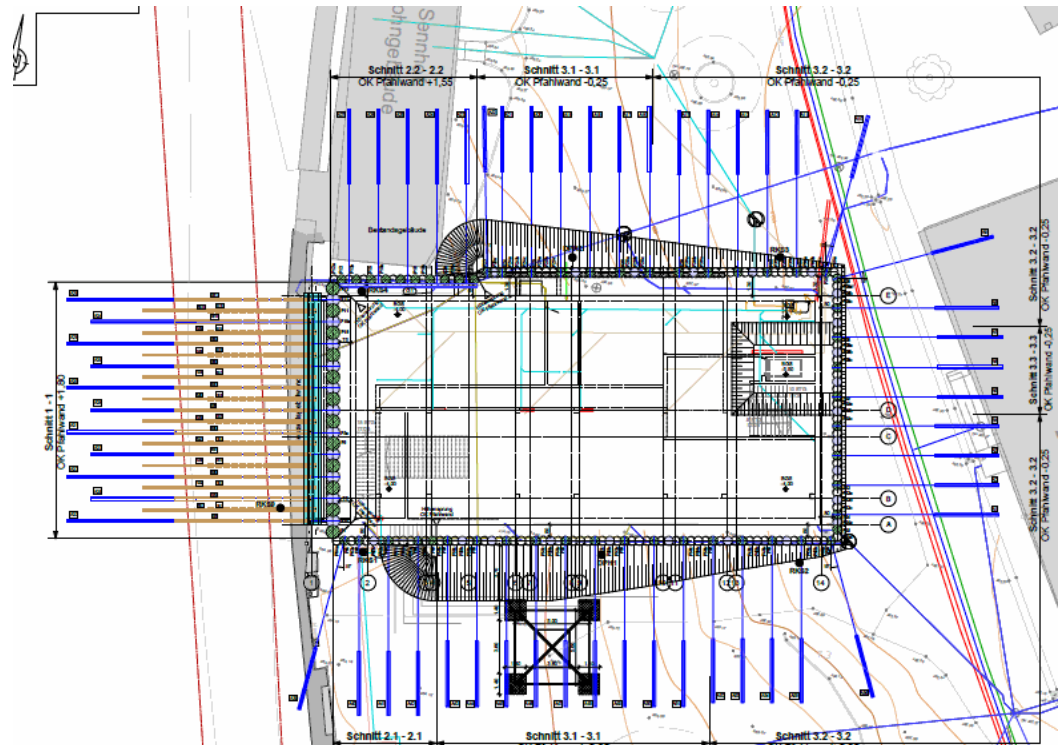
2. Demolition and New Building

2.1 Construction Stages

Preserving the gable: secured with drilled steel anchoring



Laying the foundation : up to 15-meter long reinforcement cages for the pillar foundation will be sunk in the ground and filled with cement.





Salem

2. Demolition and New Building

2.1 Construction Stages



As of April 2018



Salem

2. Demolition and New Building

2.1 Construction Stages



As of June 2018



Salem

2. Demolition and New Building

2.1 Construction Stages



As of October 2018



Salem

2. Demolition and New Building

2.1 Construction Stages



November 2018

March 2019, BL



Salem

2. Demolition and New Building

2.1 Construction Stages



November 2018



Salem

2. Demolition and New Building

2.1 Construction Stages



January 2019



2. Demolition and New Construction

2.2 Schedule

1. Issuance of 1 st building permit	August 2017
2. Demolition of old <i>Schrote</i> building	End of August 2017
3. Foundation work	Beginning of October 2017
4. Begin skeleton structural work	Mid-May 2018
5. Foundation stone laid	June 2018
6. Carpentry work	October 2018
7. Metalworking and carpentry work	October 2018
8. Dry wall construction	January 2019
9. Laying of screed	March 2019
10. Installation of heating, ventilation, plumbing and electricity	March 2019
11. Floor installation	April 2019
12. Landscaping	May 2019
13. Site cleaning and occupation of facility	June 2019
14. Official opening	July 2019





3. Donations for the *Schrote*

3.1 Financing

Costs of the *Schrote*:

Demolition of the old *Schrote* and construction of the new *Schrote* will cost 5.8 mill. euros.

The building project is being financed by Schule Schloss Salem gGmbH and the association of trustees, Schule Schloss Salem e.V.

The *Beck'sche Stiftung Berlin* has provided 350,000 euros to support the construction project.

Costs of the Assembly Hall:

Furnishings and technical equipment for the assembly hall are to be financed through fundraising:

NEEDED	COSTS
Interior design Proposals for color design Cabinetry in the foyer Director/lighting/sound box at the end of the hall	35,000 €
Electrically operated dimming system for window facade	30,000 €
Sound and lighting control equipment Curtains Stage fixtures Staircases Dance floor (smooth surface) Traverse system for light and sound in the assembly hall	90,000 €
Furniture Theater props Accessories and furnishings	70,000 €
Total costs	225,000 €



Salem

3. Donations for the *Schrote*

3.1 Financing

Current total of donations: 309,791.22 €

(March 2019)



**Individual donations
(crafts workshop included):**
58,300 €
(Goal: 50,000 €)



Chair patrons:
344 chairs
102,145 €
(Goal: 100,000 €)



Friends of Salem's reserve fund

149,346.22 €



3. Donations for the *Schrote*

3.2 Donor options

Variation 1

Become a „Chair Patron“!

Sponsor a chair for the assembly hall of the Salem *Schrote*.
The chair will bear your name.

1 chair = 300 €

5 chairs = 1.450 €

10 chairs = 2.900 €

_____ chairs = _____ €



Stuhlpaten:
Familie Müller

Example of a chair plaque

Please be aware that for logistical reasons we cannot take reservations
for your particular chair at school events. We appreciate your understanding.



Example of Certificate of Thanks

Variation 2

Procure a crafts workshop which will bear your family's or company's name

- Room „Pottery“ = 25.000 €



Example of room designation



4. Statements from the Project Managers

Bernd Westermeyer

Headmaster of Schule Schloss Salem

"Holistic education at Salem is comprised of a balanced mix of sound classroom education, a community-forming boarding school experience, as well as active social outreach services and practical craftsmanship. The reconstruction of the historical "Schrote" along the western wall of Salem Castle, where our school was founded, replicates exactly these three areas throughout its three levels and opens up new opportunities for our students to achieve their potential with head, heart and hand in arts & crafts workshops, in modern classrooms, and on the stage."



Christian Niederhofer

Business Manager | Managing Director
Schule Schloss Salem

"Being permitted to erect the first new building in so many years on the grounds of Salem Castle is a great honor for Schule Schloss Salem. This new facility is sure to be filled with life, creativity and fun, but also with work and challenges. We are very grateful to be able to offer our students, teachers, mentors and parents this wonderful location in the years to come. I am particularly looking forward to the theater performances at Salem Castle on the professionally and properly equipped stage of the new assembly hall."



Stefan Steinebach

Head of Boarding, Lower and Middle Schools
Schule Schloss Salem

"As an academic boarding school with an international focus it is important for Salem to create an adequate space in which to gather. For students the "Schrote" represents an entirely new type of encounter: learning, creativity and fun under one roof. I am especially pleased to be able to move into the new "Schrote" with the students of the lower and middle schools and to experience life and learning within these walls."





Salem

5. Contact Information

GESA MEYER-WIEFHAUSEN

Chief of Staff

Head of Communication | Fundraising | Scholarships

Tel. +49 7553 919-371

gesa.meyer-wiefhausen@schule-schloss-salem.de



BRITTA LEBHERZ

Communication | Fundraising | Scholarships

Tel. +49 7553 919-306

britta.lebherz@schule-schloss-salem.de



www.schule-schloss-salem.de/schrote